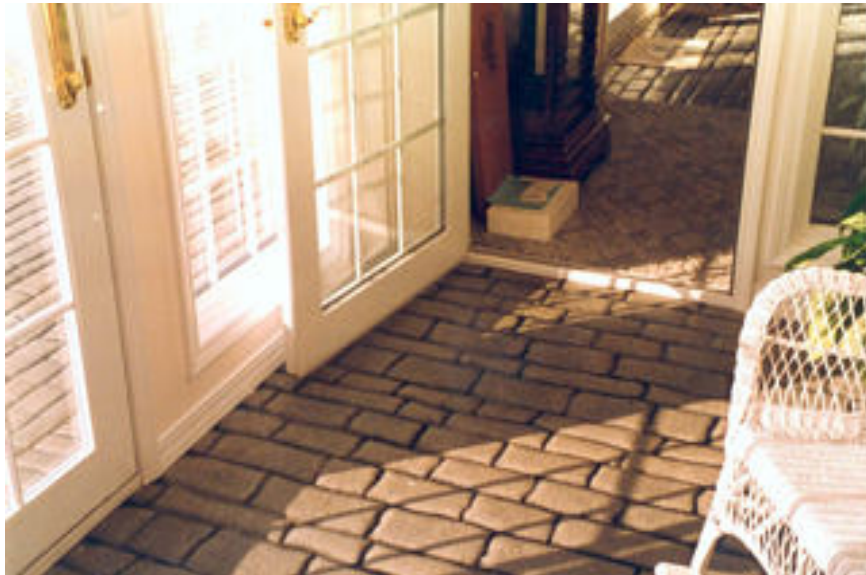


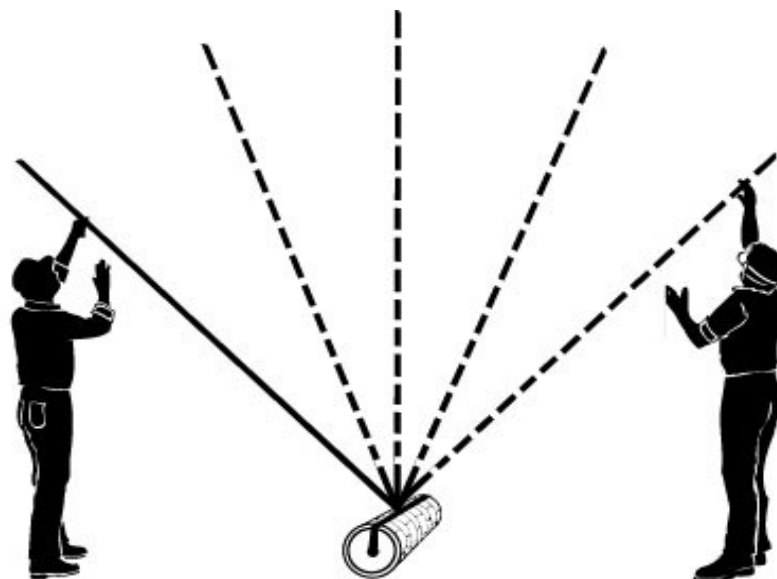
**Stamping, Equipment & Roller
Photos & Color System**





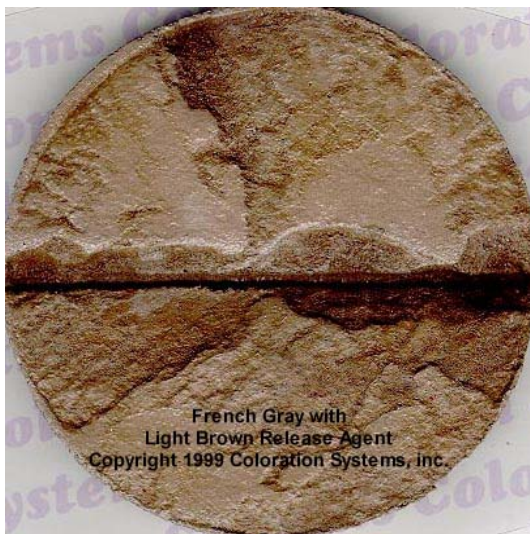




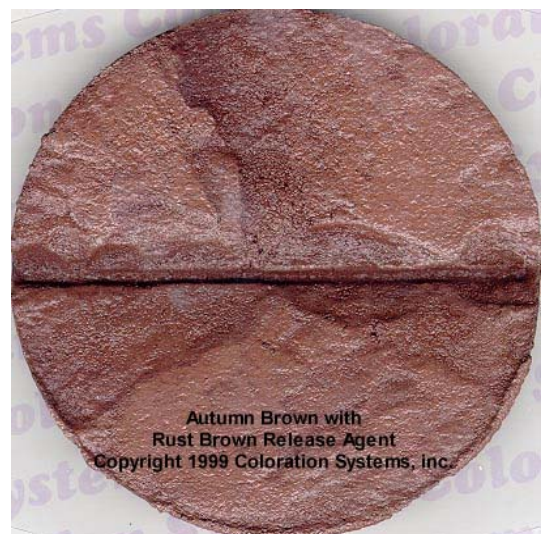
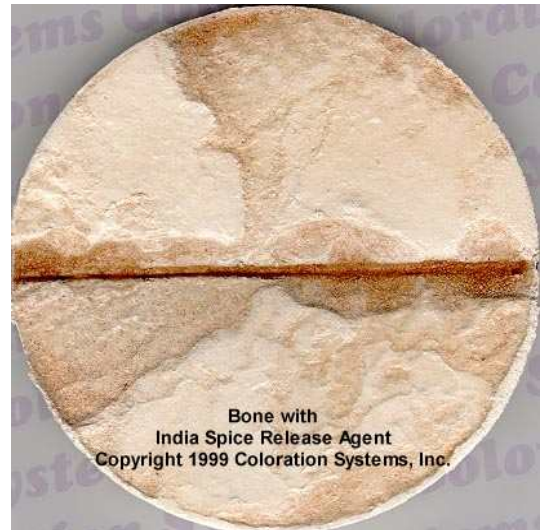


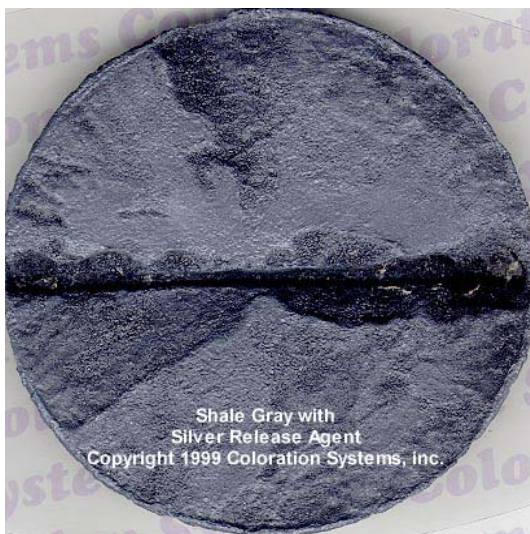
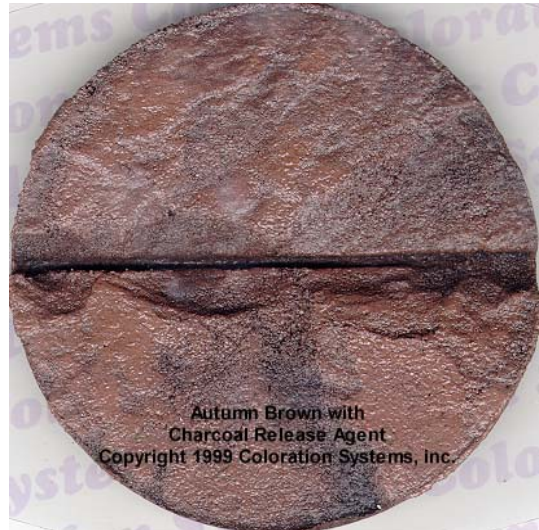
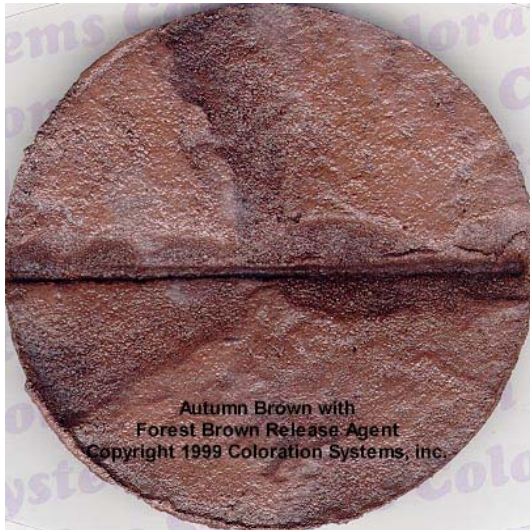
	VX13	AR22	MD5	MV3	PC5	EX4	TG7	RV9
Slick Concrete 4 water to 1 9 water to 1 14 water to 1	Ozark Gray	Tucson Gold	Smokey Mountain	Mocha Stone	Mountain Moss	Aged Bronze	Desert Sand	Sunset Red
Imprinted Concrete 4 water to 1 concentrate 14 water to 1 concentrate								

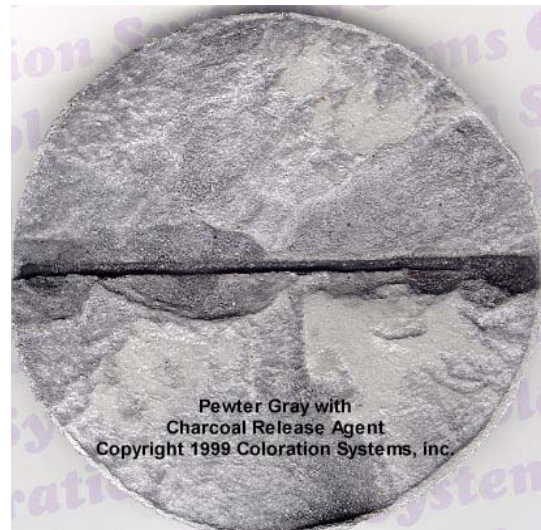

 AT 5039 506
800-746-8820 www.concreteroller.com

















LaMaCo System Sdn Bhd

407, Jalan Perusahaan 6, Taman Bandar Baru Mergong,
05150 Alor Setar, Kedah, Malaysia

Tel : +60-4-771 1111

Fax : +60-4-772 4444

Http : www.lamaco.com

Email : info@lamaco.com

IMPORTANT: While the information and data sheet contained in this promotional literature are presented in good faith and believed to be reliable, they do not constitute a part of our terms and conditions of sales unless specifically incorporated in our Order acknowledgement. Nothing herein shall be deemed to constitute a warranty, express or implied, that said information or data sheet are correct or that the products described are merchantable or fit for a particular purpose, or that said information, data sheet or products can be used without infringing patent of third parties.